

**XYZ - 2015:**  
**Fruit Trees and**  
**Other Edibles**

Presented by:  
*The Fluffy Bunny*



# Agenda

- ▶ About your host
- ▶ Thoughts on growing in the Midwest
- ▶ What can I grow in the Midwest
  - ▶ Shade tolerant plants
- ▶ Raspberries
- ▶ Blackberries
- ▶ Strawberries
- ▶ Ribes
- ▶ Fruit trees in general
- ▶ Propagation
- ▶ Pears
- ▶ Apples
- ▶ Espalier
- ▶ Question & Answer



## About your host:

*The Fluffy Bunny is an “etheric” spirit who dwells in the heart of a frustrated man, by week day he toils, mired in the deception and soul-lessness of the concrete and steel jungles of corporate America, on the weekend he finds his solace in the serenity and security of his very own little Garden of Eden where he dreams of a future of self-reliance and reflection.*

The Fluffy Bunny

[the.fluffy.bunny@muchomail.com](mailto:the.fluffy.bunny@muchomail.com)

## *Thoughts on growing in the Midwest:*

- ▶ You can grow more varieties of fruits and vegetables in the Midwest than almost anywhere in the world, on some of the greatest agricultural soil there is.
- ▶ One of the great things about growing in the Midwest is if you are bothered by a pest, every 3-7 years we will have a drought or a test winter that will almost totally eradicate the problem. They also are highly predictable!
- ▶ If the earth is getting warmer, great, we can grow more peaches, cherries, plums, and potentially apricots and figs. If it is getting colder, we will be able to grow some incredible winter apples.

# What can I grow in the Midwest?

Tree Fruits	
Apples	Quinces
Pears	Peaches/Nectarines
Cherries	Mulberries
Plums	PawPaw
Apricots	Persimmons
Plumcots/Apriums/Apriplums/Pluots	Medlars

# What can I grow in the Midwest?

## Nuts

Pecans

Walnuts

Filberts

Hazelnuts

Almonds

Chestnuts

# What can I grow in the Midwest?

## Shrubs

Blueberries	Honeyberry 4'
Gooseberries	Aronia 5-6'
Currants	Highbush Cranberry ( <i>Viburnum trilobum</i> )
Jostaberry	Seaberries
Nanking Cherry	Service Berries 4-13'
Elderberry	Goji Berries 4-6'
Cranberries	Edible Dogwoods/Cornelian Cherry
Autumn Olive ( <i>Elaeagnus umbellata</i> ) 15'	Salmonberry 6'

# What can I grow in the Midwest?

## Brambles (Rubus)

Raspberries

Blackberries

Tayberries (blackberry x raspberry)



# What can I grow in the Midwest?

## Vines

Grapes

Hardy Kiwi(*Actinidia arguta*)

Super-Hardy Kiwi(*Actinidia kolmikt*)

Akebia (vine or groundcover)

# What can I grow in the Midwest?

## Groundcovers

Wintergreen 6"

Salal - sun 2', shade 5-10"

Emerald Carpet 2-5"

Akebia (vine or groundcover)

# What can I grow in the Midwest?

## Miscellaneous

Strawberries

Lingonberries

## Shade Tolerant plants:

Strawberries	Pears
Gooseberries	Quince
Currants	Highbush Cranberry ( <i>Viburnum trilobum</i> )
Jostaberry	Seaberries
Nanking Cherry	Service Berries 4-13'
Elderberry	Goji Berries 4-6'
Salmonberry 6'	Edible Dogwoods/Cornelian Cherry
Lingonberries	Plums
PawPaws * Need shade	Emerald Carpet
Persimmons	Raspberries
Autumn Olive	Blackberries
Salal	Tayberries

# Raspberries

- ▶ Why grow raspberries
  - ▶ Huge bang for the buck
  - ▶ Never, ever will a store variety approach a plant ripened raspberry
    - ▶ The only way to taste all a raspberry can be is to grow it
  - ▶ Soft varieties that do not ship well are among the tastiest
- ▶ Cultivation
  - ▶ Will spread, pots can contain them
  - ▶ Will grow in containers well
  - ▶ Manure
  - ▶ In pots can make nice landscape plants



# Raspberries

- ▶ Raspberries
  - ▶ Summer bearing
    - ▶ Bear on 1 year old canes
    - ▶ Prune after they fruit
    - ▶ Disease can stay over winter
    - ▶ Winter damage
  - ▶ Fall bearing
    - ▶ Can bear twice a year
      - ▶ Last year canes in the spring - winter damage
      - ▶ New canes fruit in summer/fall



# Raspberries

- ▶ Recommendations
  - ▶ Summer bearing
    - ▶ Only grow summer bearing if you want a particular flavor
      - ▶ Tend not to be as long lived - exception Latham
      - ▶ Overwinter disease/insects
      - ▶ Harder to prune
      - ▶ Variety: Taylor
        - ▶ July 4<sup>th</sup> - 3 weeks

# Raspberries

- ▶ Recommendations
  - ▶ Fall bearing
    - ▶ Cut the canes to the ground in late fall/winter/earliest spring
      - ▶ Larger fall crop
      - ▶ Burn the canes
      - ▶ Varieties
        - ▶ Autumn Bliss \*
        - ▶ Autumn Britten
        - ▶ Caroline \*
        - ▶ Heritage \*
        - ▶ Fallgold - flavor, Korean



# Blackberries

- ▶ Blackberries
  - ▶ Erect
    - ▶ Thornless & Thorny
    - ▶ Primocanes (fallbearer)
      - ▶ New
      - ▶ Implication: can get berries
      - ▶ Quality so-so
  - ▶ Semi-erect
    - ▶ All are thornless
  - ▶ Trailing
    - ▶ Great flavor sweet/acid = complexity
    - ▶ Not hardy in our area



# Blackberries

- ▶ Recommendations
  - ▶ Erect
    - ▶ Primocanes (fallbearer)
      - ▶ Prime-Ark
      - ▶ Thorny
  - ▶ Semi-erect
    - ▶ Chester
    - ▶ Triple Crown
      - ▶ Attractive plant
  - ▶ Trailing
    - ▶ Don't, not hardy



# Strawberries

- ▶ Alpines
  - ▶ Usually grown by seed
  - ▶ Last a long time
  - ▶ No runners
  - ▶ Intense flavor
  - ▶ All summer long
- ▶ June bearing
  - ▶ Can last a long time
- ▶ Everbearing
  - ▶ Spring and fall crop
- ▶ Day Neutral
  - ▶ Few runners



# Strawberries

- ▶ Culture
  - ▶ Strawberries love manure
  - ▶ Renovate the hard way and your plants can last indefinitely
    - ▶ Prune leaves
    - ▶ Prune roots
    - ▶ Manure
    - ▶ Split crowns if needed
    - ▶ Replant
- ▶ Nice edging plants
  - ▶ Driveway sidewalk, planted 18 - 2ft wide strip 1 foot apart
- ▶ Do a large berry - remove all but 1-2 flowers



# Raspberries and Strawberries



# Ribes

- ▶ Black currants
  - ▶ Easily root from a cutting
  - ▶ Restart every 4-6 years
  - ▶ Short life
- ▶ Red currants
  - ▶ Long lived
  - ▶ Stunning as an espalier - 4 arm or single U
  - ▶ Root easily
- ▶ Gooseberries
  - ▶ Long lived
  - ▶ Good espalier subject as a cordon



# Let's discuss fruit trees in general

- ▶ Why fruit is not grown from seed
- ▶ Most fruit trees are known/named varieties
- ▶ Most are clonally propagated i.e very old
  - ▶ Roxbury Russet → 1640ish
  - ▶ Calville Blanc D'Hiver → 1500s
  - ▶ Rarity: Snow apple - fairly true from seed
- ▶ Over 7500 varieties of apples
- ▶ Peaches, come fairly true from seed - most self fertile
- ▶ Plums, fairly true from seed

# Let's discuss fruit trees. propagation

## ▶ Anatomy of a fruit tree:

- ▶ The variety is grown on its own roots
  - ▶ Can be achieved by scion rooting
  - ▶ Air layering
- ▶ Rootstock/scion
  - ▶ Most common
  - ▶ grafting/T-budding/chip-budding
- ▶ Rootstock/interstem/scion
  - ▶ Specialty roots, size controlling interstem, varietal scion
  - ▶ Overcoming compatibility issues





# Pears

- ▶ Pears:
  - ▶ Number one choice in our area
  - ▶ Generally pest free
  - ▶ Fireblight is a problem
  - ▶ Dormant oil spray
  - ▶ Maybe one spray
  - ▶ Blight resistant cultivars are the answer

# Pears

- ▶ Recommended Pear varieties:
  - ▶ Harrow Delight
  - ▶ Harvest Queen \*
  - ▶ Potomac
  - ▶ Warren
  - ▶ Magness
  - ▶ Harrow Sweet
  - ▶ Seckle
  - ▶ Harrow Gold



# Apples

- ▶ 7500 varieties - think you are missing something?
- ▶ Russets, sweet, tart, balanced, chewy, soft, complex
- ▶ Grower friendly trees - disease resistant
- ▶ Apple bagging
- ▶ Recommend beginner varieties
  - ▶ Dayton
  - ▶ Liberty
  - ▶ HoneyCrsip \*
  - ▶ Goldrush



# Apples - bagging



# Espalier

- ▶ Can you pronounce this French word?
  - ▶ (ĩ-spăl'yər, -yā')
- ▶ French are very, very secretive about the art of espalier
- ▶ The word *espalier* is French, and it comes from the Italian *spalliera*, meaning “something to rest the shoulder (*spalla*) against.”
- ▶ During the 17th Century, the word initially referred only to the actual trellis or frame on which such a plant was trained to grow, but over time it has come to be used to describe both the practice and the plants themselves.

# Espalier

- ▶ Why espalier?
  - ▶ Air circulation
    - ▶ Brown rot
  - ▶ Allows you to see problems easily
  - ▶ Highest quality fruit
    - ▶ Easy to balance leaves to fruit ratio
    - ▶ Easy to protect
    - ▶ Bagging and thinning easy
  - ▶ Art form
  - ▶ Therapeutic
  - ▶ Space



# Espalier

- ▶ Let's look at some examples!



## Espalier - 4 arm horizontal cordon





# Espalier



# Espalier



# Espalier



# Espalier



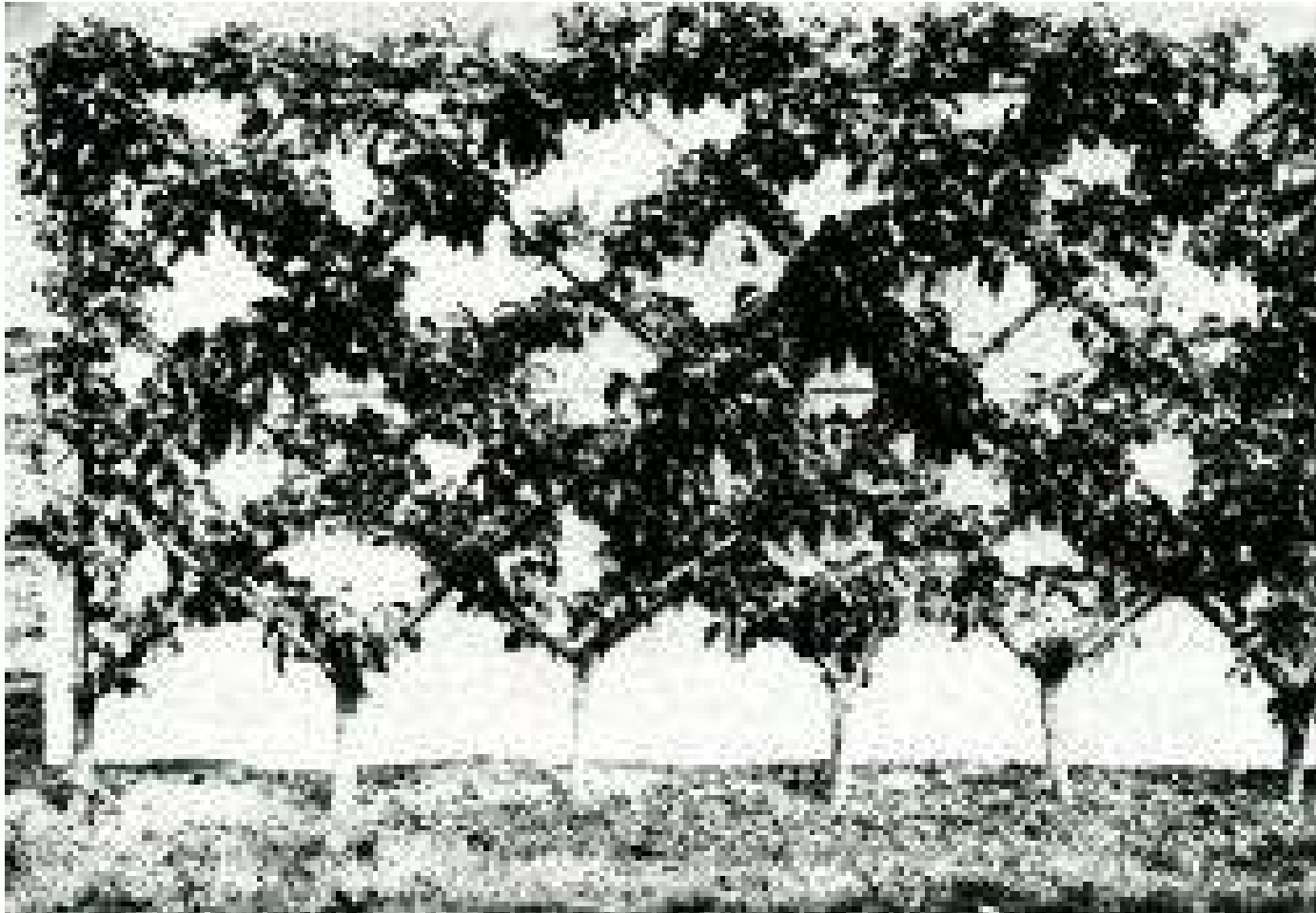
# Espalier



# Espalier



# Espalier

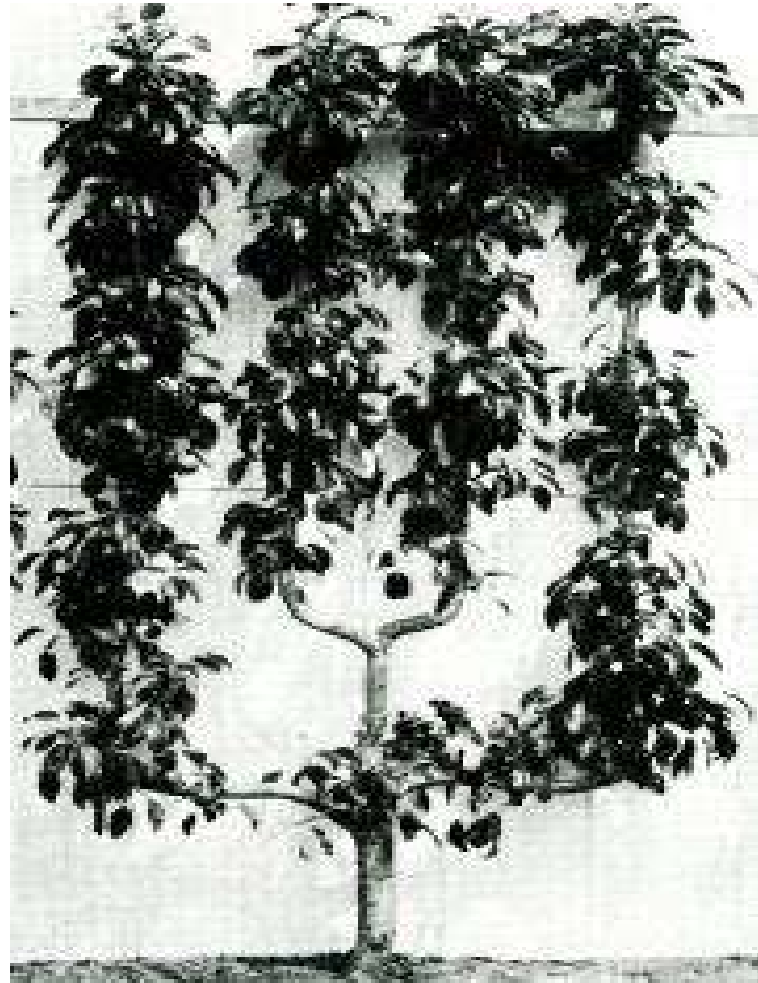


# Espalier





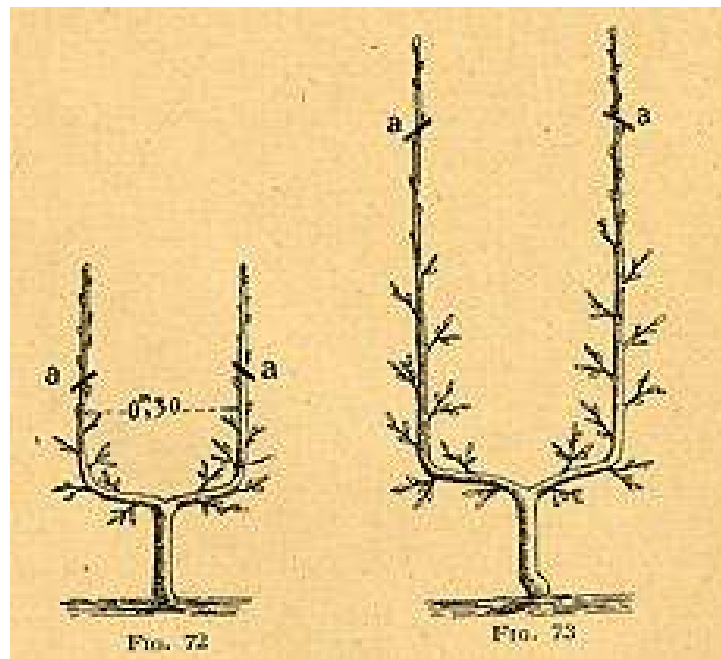
# Espalier



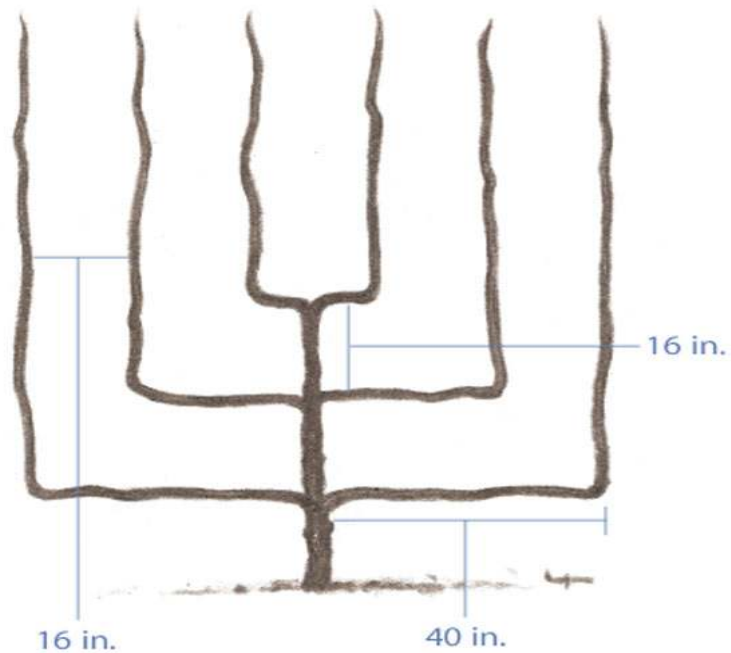
# Espalier



# Espalier



# Espalier - 6 arm palmette - triple U



# Espalier recommendations

- ▶ Apples:
  - ▶ M27 rootstock
  - ▶ M9/bud9 weak
  - ▶ M26
- ▶ Single Us on M27
- ▶ Double Us on M27
- ▶ Belgian fence on M27 - 2ft spacing
- ▶ Steptovers on M27
- ▶ 2 arm horizontal M27



# Espalier recommendations

- ▶ Pears:
  - ▶ OHxF 333/282/512
  - ▶ Triple Us -6 arm palmette
  - ▶ Too vigorous for 2 arm except maybe Seckle

Finis

Questions?

